

INSTALLATION INSTRUCTIONS

- 1- TEMPORARILY ATTACH BRACKETS TO THE BACKSIDE OF THE DEFLECTOR WITH HARDWARE AS ILLUSTRATED.
- 2- SLIP ON CHROMED TRIM EDGE TO BOTTOM EDGE OF THE HOOD DEFLECTOR AND CUT OFF EXCESS.
- 3- POSITION THE DEFLECTOR ON HOOD. BE SURE THAT THE BOTTOM EDGE OF THE DEFLECTOR IS FLUSH TO THE EDGE OF THE GRILL. **NOTE 3**
- 4- MARK BRACKET HOLES ON HOOD.

ATTENTION

DO NOT MARK SIDE HOLES, IT WILL BE DONE IN A FURTHER STEP.

CAUTION

REMOVE THE HOOD DEFLECTOR TO PREVENT DAMAGE

- 5- DRILL HOLES AS MARKED AT 9/32" (.28125") DIA.
- 6- TEMPORARILY INSTALL THE DEFLECTOR AS ILLUSTRATED.
- 7- PRESS SIDE OF THE DEFLECTOR ONTO THE HOOD AND MARK HOLES.

CAUTION

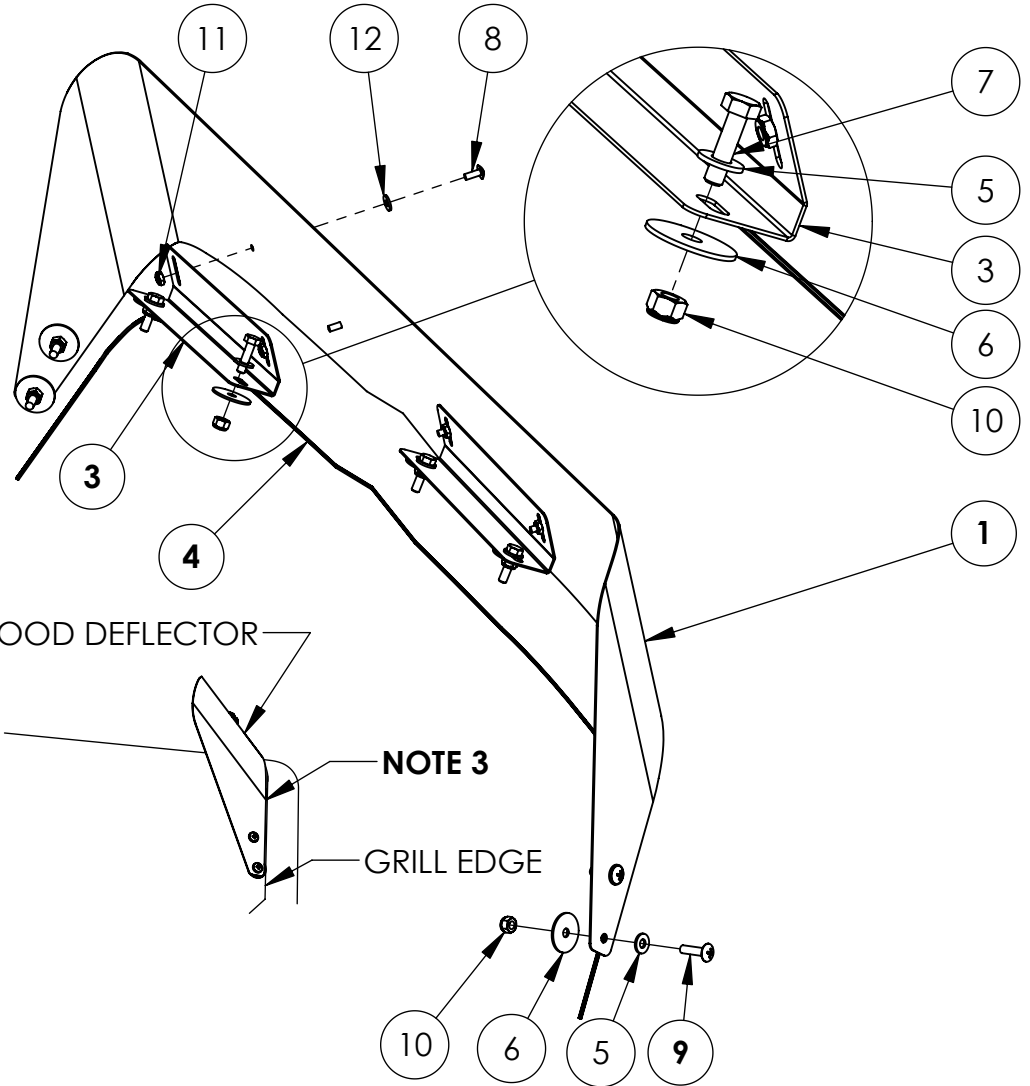
REMOVE THE HOOD DEFLECTOR TO PREVENT DAMAGE

- 8- DRILL SIDE HOLES AT 9/32" (.28125") DIA.
- 9- INSTALL THE DEFLECTOR WITH HARDWARE AS ILLUSTRATED.
- 10- TIGHTEN ALL SCREWS AND BOLTS.

HOOD DEFLECTOR

NOTE 3

GRILL EDGE



ITEM NO.	PART NO.	DESCRIPTION	QTY
1	CL7121002-C00	DEFLECTEUR DE CAPOT	1
2	K7121002BH	HARDWARE KIT INCLUDES:	1
3	-	PR34DEG	2
4	-	ES28-215-P80	1
5	-	FLAT WASHER 1/4"	8
6	-	FENDER WASHER 1/4"OD1 1/4"Z	8
7	-	HEX. BOLT 1/4NC X 1	4
8	-	TRUSS PHILIPS #10-32NFX1/2" SS	4
9	-	TRUSS PHILIPS 1/4-20NC X 1	4
10	-	NYLON LOCK NUT, 1/4-20 UNC	8
11	-	NYLON LOCK NUT #10-32NF SS	4
12	-	FLAT WASHER ID#10 X OD 1/2" SS	4

TRUX ACCESSORIES			
TITLE: HOOD DEFLECTOR PETERBILT 379			
SIZE	DWG. NO.		
A THOD-PET379			
NAME	DATE	REV	DATE
DRAWN BY P.W.	12-02-2009	PH1	-
SCALE: 1:6		WEIGHT: LBS	SHEET: 1 OF 1